



Irresistible Church Training

For Disability Ministry

Presented by



Call Me Friend Presentation Outline

How to Use:

This script lays out suggested talking points and content pulled directly from the specific book/resource highlighted. Here are a few things to know before you begin to use these scripts:

1. **Bold Type** is what you say. *Italic type* are suggestions and instructions.
2. The script is laid out with wide margins for easier reading without too much side to side eye movement. Sentences and paragraphs are broken up by phrasing and suggested pauses. = indicates a thought, phrase, or slight pause. • indicates the next slide.
3. In the *Italics* you will find suggestions for customizing the material with personal stories or examples, local resources, churches, or people who have made a difference...
4. The slides combine the Irresistible Church logo and the Joni and Friends logo (*new Logo will be replaced in 2019*) on a themed slide to create a consistent branding throughout the presentation. Please do not change this formatting.
5. The first 3–5 slides will be similar in each presentation to allow you consistency in introducing yourself, the topic, Luke 14, and a definition of an Irresistible Church. If you are doing more than one session in a day, we suggest you present these slides in the first session and eliminate them in later presentations on the same day. (*You could also use them to encourage participation, or “test” the audience and ask them to describe the Luke 14 Mandate or to define an Irresistible Church*)
6. We have added suggested resources for each participant, for a book sales table, and have added a video presentation about Joni and Friends. If you are doing several presentations during the day you could replace the video *It’s Personal* with video highlights of your local ministry. It is important that we take the time to offer ourselves and our resources to the churches we serve.

Call Me Friend Presentation Outline:

Main objective:

Supplies: *Bible* with all passages marked, copy of *Call Me Friend* book for each participant, Family Ministry Profile for all, PowerPoint in handout form, pens for each person.

Before your event: Set up a resource table that contains books and resources for sale. Include Joni and Friends ministry brochures and any local area ministry brochures. You might even want to include those on the participant tables with any notes you want to provide for the meeting.

We suggest providing a *Call Me Friend* book at each participant chair.

Suggested resources for sale with *Call Me Friend*:

Engaging Game Changers, Joni: An Unforgettable Story (book), *Beyond Suffering Bible, Real Families, Real Needs, Another Kind of Courage, Irresistible Church Series ALL books, Same Lake, Different Boat*

SLIDE 1:

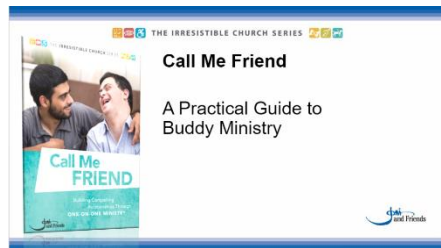


(Use this slide while people arrive. You can choose to play some music in the background while the class arrives, gets settled and prepares for the session. If you want to add music

to this presentation here is how you do it.

Go to Insert, Media, Audio/Audio on my PC. Choose the song and it will add a small music icon that you can place in the corner. You can customize the settings by clicking play back. Here's how you do it. Click the music icon on the slide, then click playback from the menu. All your options are here.)

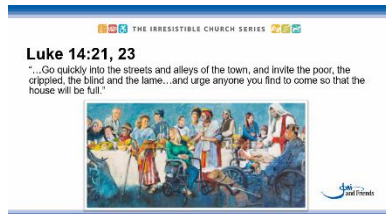
SLIDE 2:



(When you are ready to begin click to this slide. The music should stop so that you can begin presenting. Start your presentation with an introduction of who you are

and maybe a short story about yourself and a time that you were touched by this ministry. Maybe in your personal life, ministry life, etc. Something that allows the audience to connect with you right away.)

SLIDE 3:



(It is nice to begin the presentation with an open Bible. We suggest teaching using the Beyond Suffering Bible.)

OPEN YOUR BIBLE: Read Luke 14: 21-23

Luke 14 shares the story of a man giving a banquet, providing a glimpse into God's heart for all people.

Through this scripture we see that God's desire for those who have been marginalized is to

- = be fully welcomed and**
- = embraced by the church, just as this man insisted those with disabilities**
- = join him at his banquet.**

Why?

According to the Bible

- = Every person has equal worth and value
 - because we are created in God's image.
- = Each person is an indispensable part of the Body of Christ with unique gifts and abilities (*Read 1 Corinthians 12*)
- = Every part (every person) is necessary for the body (the church) to function as God intended

SLIDE 4:



The definition for an irresistible church evolved as a response to God's heart and desire for those that have been marginalized.

(Read Together)

"An Irresistible Church is an authentic community built on the hope of Christ that compels people affected by disability to fully belong."

(Repeat)

As a body of believers, we want to use Jesus as a model

- = to create a church family that compels people with disabilities to come in
- = so that His house may be full.

Close your eyes right now and imagine with me what this might look like. Keep them closed and listen to my words:

Instead of creating another program, let us think for a moment what the church might look like if everyone,

- = regardless of special needs, or extraordinary abilities**
- = were embraced as a fully functioning member of the body of Christ.**
- = Regardless of Cognitive processing, verbal communication,**
- = behavioral struggles, or physical ability,**
- = each member would be valued as a person,**
- = flawlessly created in the image of God.**
- = Would this church be irresistible?**

What would this church say to anyone who is skeptical?

- = That there is a place for them in God's family?**
- = What about the unemployed father and his family,**
- = the addict,**
- = the young mother going through divorce, the chronically ill, the widowed,**
- = the young single girl searching for God's purpose in her singleness,**
- = the perfectionist,**

- = **the young adult dealing with a mental illness who needs acceptance...**

This would be the church of Luke 14,

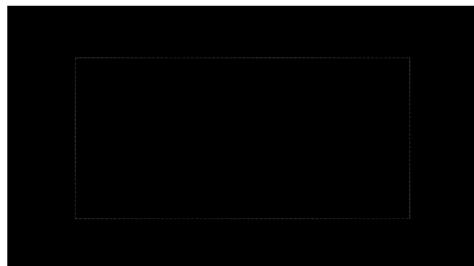
- = **where people are urged and compelled to come in.**
- = **This is easy to think about, but it requires real change and that is hard.**
- = **To simplify this a bit, there are two things that people affected by disability overwhelmingly agree that they desire from the Church.**

- 1. Accessibility to existing structures, programs and people.**
- 2. Acceptance and a sense of belonging extended from others within the church.**

Sounds simple enough, so how do you start?

A great place to create this sense of belonging is to provide a buddy who can call them friend..."

SLIDE 5 – Joni’s Story (*Video begins immediately*)



(You can introduce Joni’s “It’s Personal” video by saying...)

I would like you to see how a person with a disability

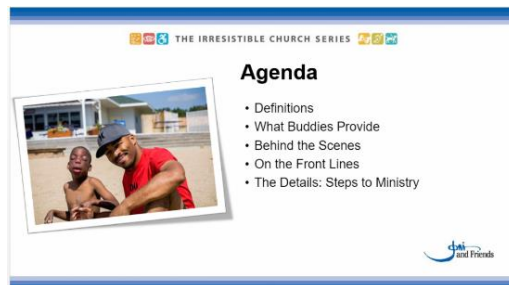
- = **who was disciplined by Christian friends**

- = can go on to use the gifts God gave her to bring us to this place today.
(play video)

Everything we do at Joni and Friends is because at the lowest point in her life Joni found hope in Jesus,

- = the Bible
- = and Christian friends who showed her how to live.
- = One of the major ministries we have at Joni and Friends is our Church Engagement ministry.
- = Which is why you are here today. Our mission is
- = to equip you, the church, to serve those people affected by disability.

SLIDE 6



- In the next 30 minutes we will begin by looking at definitions of terms and exploring what a Buddy Ministry really is.
- We will look at what function and purpose buddies provide. We will spend most of our time looking at how a Buddy Ministry works and how it serves families.

- **Then we will spend a little time looking behind the scenes to see how this ministry meets the needs of your families while fitting into your organization's mission and goals.**
- **We will then step onto the Front Lines and consider what it might look like to recruit, train, and support the buddies in your ministry so they can be the hands and feet of Jesus.**

SLIDE 7

A presentation slide titled "What is a Buddy Ministry?" under the heading "THE IRRESISTIBLE CHURCH SERIES". The slide features a definition of a Buddy Ministry, a photograph of two young women smiling, and a logo for "dm and Friends".

THE IRRESISTIBLE CHURCH SERIES

What is a Buddy Ministry?

A Buddy Ministry is a program of the church designed to support the disability community by pairing an individual with a disability with a buddy during church services so that they can participate within the mainstream programs of the local church.



dm and Friends

- *(Read the definition on the slide and explain this in your own words. How does this play out in churches where buddies are used, give examples)*

Scripture is full of famous pairs who bring to life the truth in Ecclesiastes 4:9 which says, "Two are better than one, because they have a good reward for their toil." Jesus sent his disciples out in pairs because he understood this truth.

SLIDE 8



What Buddies Provide-

- Discipleship:
 - = To create a buddy ministry without the commitment to disciple those with disabilities is to miss the entire heart behind this ministry.
 - = The buddies working in your ministry should display the fruits of the spirit and have the heart of discipleship.
- Friendship:
 - = A buddy should create a give and take friendship with their friend.
 - = Creating clear boundaries and expectations can guard buddies from feeling like they need to be inseparable from their friends.
- Safety:
 - = Students with autism are more likely than typical children to run or bolt from safe places. Therefore, providing a 1-on-1 buddy can help to insure their safety.

- = Buddies can help friends steer clear of foods they are allergic to and other environmental hazards.
- = They can also help friends learn more appropriate ways to handle situations that may lead friends to self-injurious behavior.
- = Research suggests that people with disabilities are 3 times more likely to be sexually abused than other people.
 - o Have each volunteer complete a background check and personal history form as a precautionary method.
 - o Keep doors open and the classroom visible.
 - o No person should ever be left alone in a room with a person with a disability.

SLIDE 9

THE IRRESISTIBLE CHURCH SERIES

What Buddies Provide

 <p>Participation Buddies can help our friends participate as fully as he or she can.</p>	 <p>Communication Assistance Buddies can be the voice and advocate for their friends.</p>	 <p>Positive Behavior Reinforcement All behavior is a form of communication.</p>
---	---	---

jmi and Friends

- Participation:
 - = Buddies can help our friends participate in activities and game

- = They can also help friends navigate social situations and create friendships with others
- = Try and work with buddies to make sure they are not participating for their friends but helping their friends participate on their own
- Communication assistance
 - = Buddies can be the voice that advocates for their friends.
 - = Buddies can facilitate communication between:
 - Leadership to friend – Helping communicate lessons taught, etc.
 - Friend to leadership and peers
 - Friend to friend
 - Friend to parents – Buddies can help explain to parents what their children are learning. A buddy can help create a spiritual journal.
 - Buddies create a consistent picture of God's love for our friends.
 - They communicate presence in the midst of the good, bad, fearful, and sad times.
 - By communicating God's love for our friends, you also communicate God's love to their family members.
- Positive behavior reinforcement
 - = Training buddies to understand that most behavior is a form of communication.
 - = Remember SEAT:

- Sensory - expressing their desire for sensory input (jumping, etc.)
- Escape - a desire to get away from something or someone
- Attention - trying to capture someone's attention
- Tangibles - expressing a desire for a preferred item or activity

= For more information please read *Responding with Compassion*.

= Creating schedules and using timers for our friends can be very helpful when it comes to dealing with behaviors and helping with transitions.

SLIDE 10

Activity: What Buddies Provide

- Talk about how these things might look as they are implemented in your church community.
- What are the needs of your community?

Discipleship
We are called to make disciples of all nations. Matt. 28:19-20

Friendship
Good buddies get to know the person they are paired with as a person.

Safety
Buddy Ministry can be wholeheartedly embraced as a very successful answer to how to keep our most vulnerable church members safe.

Participation
Buddies can help our friends participate as fully as he or she can.


Communication Assistance
Buddies can be the voice and advocate for their friends.

Positive Behavior Reinforcement
All behavior is a form of communication.

- This activity should take 5 to 6 minutes.

(If you have a large group, you may want to break that into smaller groupings of 5-6 people to encourage a more robust and open conversation.)


SLIDE 11



THE IRRESISTIBLE CHURCH SERIES

Behind the Scenes

- Ministry Leadership
- Chain of Communication
- Documentation and Debrief



- Ministry leadership
 - = Appoint a "Buddy Ministry Coordinator" to manage communication with church leadership, volunteers, and families.
 - = The coordinator can communicate to leadership the needs of the people in the ministry and share what God is doing through the special needs ministry.
 - = The benefit of appointing a staff member or lead volunteer to be the "Buddy Ministry Coordinator" avoids adding an extra part-time job to a full time ministry staff member.
- Chain of communication
 - = Creating a "Buddy Ministry Coordinator" position provides a point person to receive and communicate needs, praise reports, and concerns.\
- Documentation and debrief

- = Good documentation is necessary for the ministry to keep moving forward. If there is a change in leadership in any area of the church, good documentation can make sure the ministry continues with little disruption.

- = If the buddy assigned to a friend changes each week, keeping some sort of journal with a record of behavior patterns and observations can provide consistency.

- = Documenting where our friends are spiritually can help our buddies know what to ask and how to come alongside our friends.

- = A notebook or file could contain the following:
 - Up-to-date intake form
 - Recent photograph
 - Behavior management plan (if needed)
 - Week-to-week log/journal
 - Discipleship plan and goals
 - A record of spiritual milestones

SLIDE 12



THE IRRESISTIBLE CHURCH SERIES

**On the Front Lines:
The First Steps to Getting Buddies**

- Terms of Service
- Recruiting Buddies
- Training Buddies

www.irresistiblechurch.org

Call Me and Friends

- Terms of service:
 - = Buddies should represent and be able to help in all the areas listed under “What Buddies Provide.”
 - = Try and have two buddies per friend that can alternate every other week
- Recruiting buddies:
 - = The first step is always prayer, asking for God’s wisdom
 - = Reach out to many different groups of people, including small groups, youth and young adult groups, to partner with other ministries.
 - = Invite potential buddies to observe or shadow a buddy with a friend, or observe a specialized classroom or respite event, to learn how to be comfortable with people with disabilities.

- Training buddies:

- = Everyone should have a basic training on disability awareness and etiquette.

(Offer our download from the IC site to give them some initial training on disability etiquette. Review one or two of the suggestions from here:

*<https://irresistiblechurch.org/wp-content/uploads/2018/02/DisabilityEtiquette.pdf>, e.g. *Interacting with a person in a wheelchair, Greeting a family, or People first language.*)*

- = Buddies should also be trained in church policies and procedures.

- For example, what to do in an emergency, bathroom breaks, and medical procedures.

- = The more information buddies know about their friend the better they can come alongside and build a friendship.

(You might want to show a Parent Intake Form as an example of providing information for the buddies about the child they are serving.)

- = For more information please read *Engaging Game Changers*.

(Have a copy of this book available for sale for anyone who is interested.)

SLIDE 13

THE IRRESISTIBLE CHURCH SERIES



On the Front Lines: Recruiting Buddies

Write down a list of people you think might be potential buddies or contacts who can help put you in touch with potential buddies.

www.irresistiblechurch.org



Set a time limit, about 1 – 2 minutes, and ask people to think about their ministry and who might be good buddies for the friends they desire to serve.

SLIDE 14

THE IRRESISTIBLE CHURCH SERIES

Lisa's Story

- Story slide



Take this time to tell the story of how the Buddy Program has impacted a family. Edit this slide to match your story.

SLIDE 15



- Pairing buddies with friends:
 - = High school and middle school students usually enjoy being paired with someone their age.
 - = If a friend is a runner, make sure their buddy is physically able to keep up with their friend.
- When a diagnosis is suspected:
 - = It is never appropriate to try and diagnose or ask the parents to get their child tested for a disability.
 - = Train your volunteers in behavior management and work to find solutions to the perceived problem.
 - = If a friend is still having difficult behaviors, ask the parents for suggestions and adaptations that they think may be helpful.

- Family volunteers:
 - = A general principle to follow is not allowing family members to be a buddy for their family member affected by disability.
 - = Inviting siblings and parents to serve in other ministries may be a better way for them to get involved.
- Scheduling:
 - = Ask for a commitment from buddies 2-4 weeks prior to serving.
 - = Have one central location for buddies to sign up and see current needs.
 - = If a buddy is going to miss a week, encourage them to find their own replacement.
 - = A schedule communicates that commitment and follow through are important to your ministry.
- Buddy support:
 - = Be available if your buddies need support in any area (behavior, equipment, etc.)
 - = Coach, encourage, and pray for your buddies!

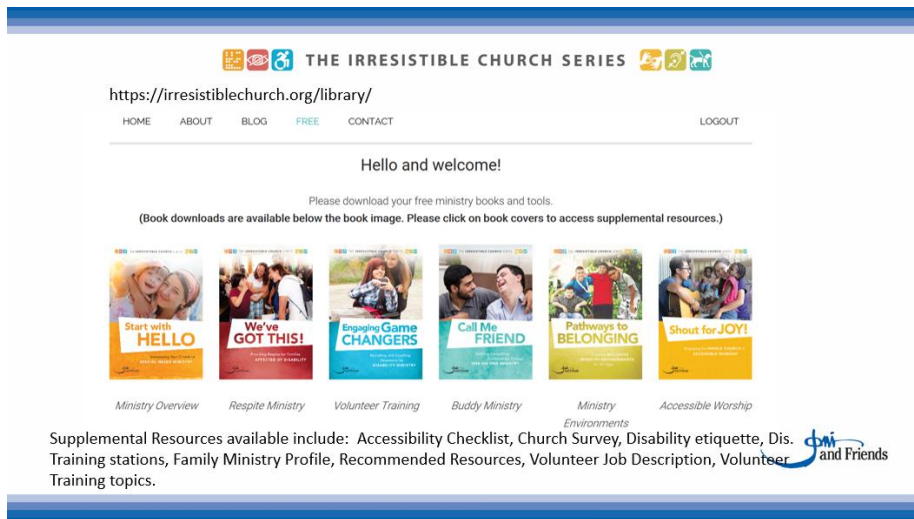
SLIDE 16



***Moment of reflection:** After hearing this presentation what are two things you can take and apply in your church?

Resources for growing your disability ministry

SLIDE 17 Irresistible Church Site



One of the most significant resource opportunities we have for churches is the Irresistible Church.org.

= This site is packed with resources

- = a blog,
- = free downloads of books
- = and resources for the church.
- = Go to irresistiblechurch.org and register for FREE.
- = You will find the library page which allows you to download free and reproducible resources
- = for developing a Disability ministry within your church.

In addition, we have a resource table where you can buy resources for your church,

- = learn more about the ministry of Joni and Friends and connect with us for more information.

SLIDE 18 Closing Slide

THE IRRESISTIBLE CHURCH SERIES



Contact Us:

- Add contact information
- Additional resources for sale at this event. Please visit our book table.



Close in prayer...

Update this slide with your contact information.